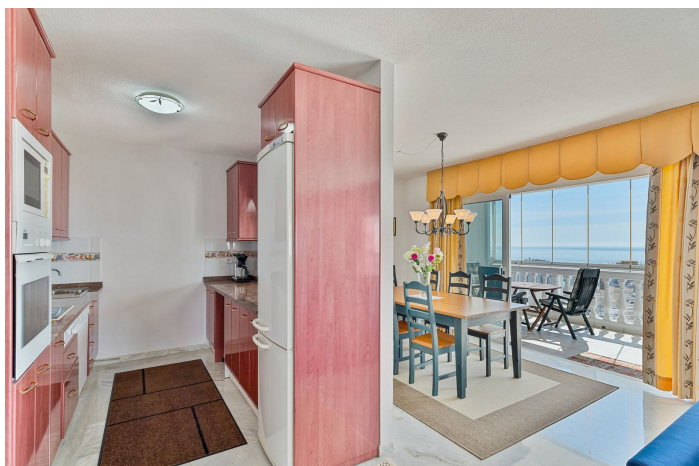




# Apartamento en Planta Última en venta en Fuengirola, Fuengirola

550.000 €

Referencia: R5354110    Dormitorios: 2    Baños: 2    Construido: 123m<sup>2</sup>    Terraza: 15m<sup>2</sup>





---

## Costa del Sol, Fuengirola

Stunning penthouse with incredible sea views and south orientation. Spacious apartment with 138 m<sup>2</sup> of surface area, this property stands out for its good construction quality. It has two large bedrooms and an office, two full bathrooms, a perfectly equipped kitchen and a large living room with fireplace. A spectacular 20 m<sup>2</sup> terrace provides light and is ideal for enjoying the best sea views. In addition, it has two closed and private garage spaces, a communal pool, offering everything for a comfortable and exclusive life. Property equipped with intercom, underfloor heating throughout the house, air-conditioning, fitted wardrobes and sauna. The property is designed to enjoy the Mediterranean climate, ideal for both families and those looking for a privileged space to relax. During the construction phase, this home has been combined from two one-bedroom apartments into one larger entity, which is why they can be renovated into two separate apartments if desired.

To access the house there is a staircase without elevator and so we do not recommend it to those with reduced mobility.



## Características:

### Características

Terraza Cubierta  
Terraza Privada  
Baño En-Suite  
Doble acristalamiento  
Armarios Empotrados  
Sauna

### Vistas

Vistas al Mar  
Vistas a Montaña  
Vistas Panorámicas

### Piscina

Piscina Comunitaria

### Jardín

Jardín Comunitario

### Servicios Públicos

Electricidad  
Agua Potable

### Orientación

Sur

### Posición

Urbanización

### Muebles

Completamente Amueblada

### Seguridad

Recinto Cerrado

### Categoría

Reventa

### Climatización

Aire Acondicionado  
Chimenea  
Suelo Radiante

### Estado

Buen estado de conservación

### Cocina

Cocina Equipada

### Aparcamiento

Garaje  
Párking Privado  
More Than One