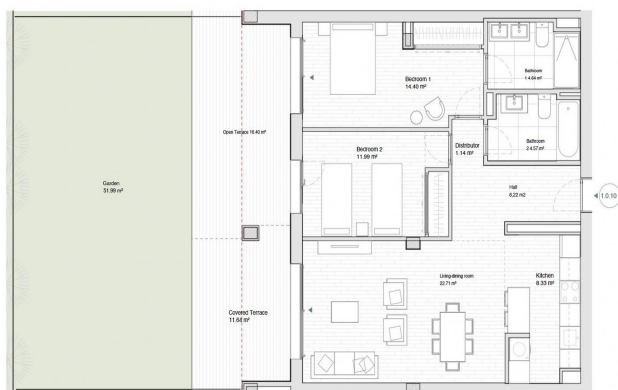




Apartamento Planta Baja en venta en Estepona, Estepona

635.000 €

Referencia: R5354095 Dormitorios: 2 Baños: 2 Terreno: 52m² Construido: 94m² Terraza: 28m²





Costa del Sol, Estepona

Brand new 2-bedroom, 2-bathroom ground floor apartment in the recently completed Isidora Living development in Estepona, offering the rare combination of a modern, key-ready home with the financial advantage of being a resale. As the property has already completed, it is purchased with just 7% ITP instead of the usual 10% VAT plus stamp duty applicable to new builds, representing a notable saving for the next owner.

The apartment offers a well-designed contemporary layout with a bright open-plan living and dining area connected to the outdoor spaces. In addition to a generous 29m² of terraces, ideal for outdoor dining and relaxing, the property also benefits from a private 52m² garden, giving it the feel of a small house and making it particularly attractive for buyers looking for ground floor living with usable exterior space.

The current owners have also added several value-enhancing upgrades. The kitchen was improved from the standard specification to a higher quality Siemens appliance package - valued at nearly €8000, and the property includes an allocated underground parking space within the secure garage together with an additional private storage room, purchased specifically to improve practicality and long-term resale appeal.

Isidora Living is a contemporary gated community with well thought-out communal areas including tropical landscaped gardens an adult swimming pool and separate children's pool, a fully equipped gym, a co-working and social space, outdoor barbecue area and a dedicated children's play area.

The location is another strong feature, within comfortable walking distance of Estepona town, the beach and daily amenities, making this an excellent option for both full-time living and holiday use.



Características:

Características

Terraza Cubierta
Ascensor
Cerca de Transporte
Terraza Privada
Trastero - Almacén
Armarios Empotrados
Gimnasio
Lavadero
Cerca de una Iglesia
Access for people with reduced mobility

Posición

Lado de la Playa
Cerca de Puerto
Cerca del Mar
Cerca de Tiendas
Cerca de Ciudad
Cerca de Colegios
Ciudad
Cerca de Marina

Muebles

Sin Amueblar

Seguridad

Recinto Cerrado

Climatización

Aire Acondicionado
Calefacción Central.

Estado

Excelente estado de conservación
Nueva Construcción

Cocina

Cocina Equipada

Aparcamiento

Párking Subterráneo
Garaje
Párking Privado

Vistas

Vistas a Jardín
Vistas Urbanas

Piscina

Piscina Comunitaria
Children`s Pool

Jardin

Jardín Privado

Categoría

Casas de vacaciones
Inversion
Reventa