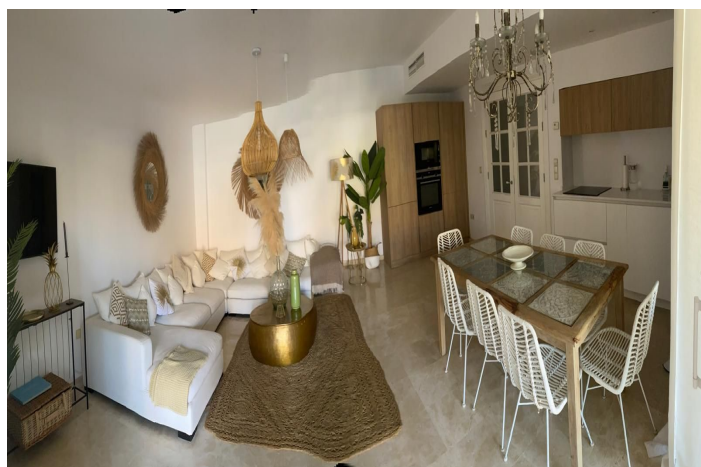
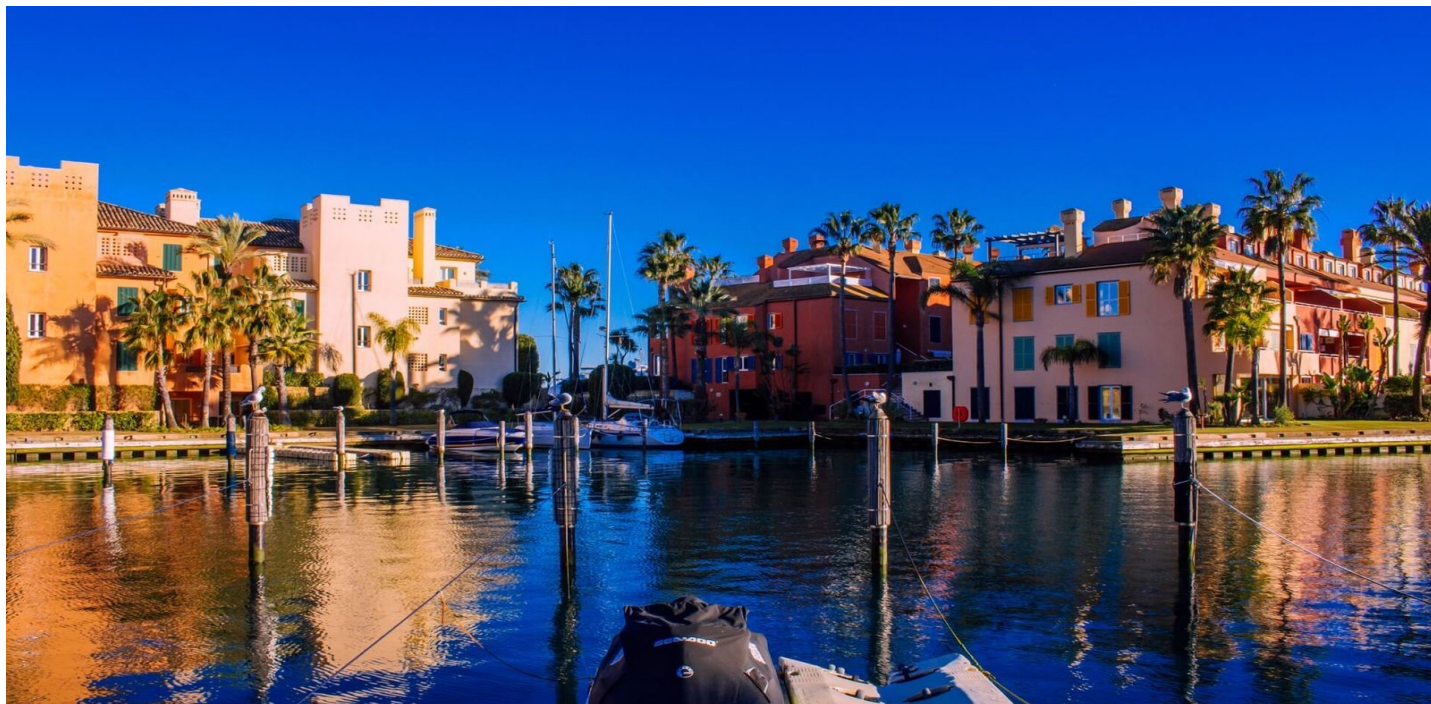




Dúplex en venta en Sotogrande, Sotogrande

1.585.000 €

Referencia: R5354473 Dormitorios: 4 Baños: 4 Terreno: 25m² Construido: 300m² Terraza: 50m²





Costa de la Luz, Sotogrande

Unique Waterfront Ground-Floor Duplex with Private Boat Mooring & Direct Beach Access – Paseo del Mar, Sotogrande

Exceptional below-duplex in the most exclusive section of Paseo del Mar, just steps from Catamaranes beach in Sotogrande's prestigious La Marina.

This rare 300 m² property offers the ultimate marina lifestyle: direct access from your own private garden and 50 m² covered porch to a private boat mooring (up to 14 m), plus communal pool and gardens.

Completely exterior with floor-to-ceiling windows, south-facing and flooded with natural light. Fully renovated with excellent taste 6 years ago and sold fully furnished and move-in ready.

Key Features

300 m² built over two levels

4 bedrooms (3 en-suite with fitted wardrobes, TV and full bathrooms) + 1 additional service bedroom

4 bathrooms + guest WC

Open-plan living room with brand-new kitchen

50 m² covered porch in three different areas

Private garden with direct access to your own boat mooring

Large covered underground parking space + excellent storage room / pantry

Air conditioning + individual heat pump heating

Built 2001 | Excellent condition | Ground floor with lift

Prime Location

Just metres from the beach, within the exclusive Sotogrande marina. Perfect for those seeking a luxury waterfront home with every comfort and the unique advantage of private boat access.

A truly unique opportunity in one of the Costa del Sol's most prestigious waterfront locations.

Viewing highly recommended – contact us today to arrange a private viewing!



Características:

Características

Terraza Cubierta
Ascensor
Cerca de Transporte
Terraza Privada
Trastero - Almacén
Baño En-Suite
Suelos de Mármol
Doble acristalamiento
Armarios Empotrados
WiFi
Fibra óptica

Vistas

Vistas al Mar
Vistas a Jardín
Vistas a Playa
Vistas a Puerto
Vistas a Patio

Piscina

Piscina Comunitaria

Jardín

Jardín Comunitario
Jardín Privado

Categoría

Frente a la playa
Golf
Lujo

Orientación

Sur

Posición

Área Comercial
Lado de la Playa
Cerca de Golf
Cerca de Puerto
Urbanización
Cerca del Mar
Cerca de Tiendas
Cerca de Ciudad
Cerca de Colegios
Primera línea de Playa
Puerto
Marina
Cerca de Marina
Complejo 1ª Línea de Playa

Muebles

Completamente Amueblada

Seguridad

Alarma

Climatización

Aire Acondicionado

Estado

Excelente estado de conservación
Renovado Recientemente
Reformado Recientemente

Cocina

Cocina Equipada

Aparcamiento

Párking Subterráneo
Párking Privado
Párking Cubierto