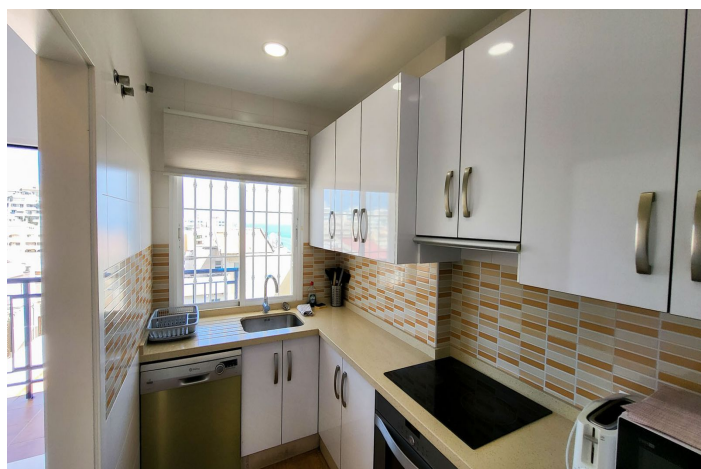




Apartment mit mittlerer Etage zum Verkauf in Torremuelle, Benalmádena

325.000 €

Referenz: R5352829 Schlafzimmer: 2 Badezimmer: 2 Garten: 60m² Terrasse: 15m²





Costa del Sol, Torremuelle

Bright Corner Apartment – Benalmádena

A delightful and well-presented 2-bedroom corner apartment situated on the second floor of a small, well-maintained building in the sought-after Torremuelle area.

The property offers:

- 2 spacious bedrooms
- 2 bathrooms
- A separate east-facing kitchen with lovely coastal views
- A bright and generous living and dining area
- A large west-facing terrace enclosed with glass curtains, perfect for year-round use, with sea views and mountain views

Additional features include:

- Private underground garage space
- Access to a well-kept community with an excellent swimming pool

Ideally located within walking distance to the beach, shops, and restaurants, this apartment is perfect as a holiday home, rental investment, or permanent residence. The current owner had it long term rented out for 1250€ a month.

Easy viewings available – keys in hand.



Eigenschaften:

Merkmale

Überdachte Terrasse
Aufzug
In der Nähe des Transports
Private Terrasse
Badezimmer
Einstellungsschränke
W-lan

Ansichten

Meer
Berg
Urban
Straße

Pool

Gemeinschaft

Sicherheit

Gated Complex

CO2 -Emissionsbewertung

E

Orientierung

West

Einstellung

In der Nähe des Meeres
In der Nähe von Geschäften
In der Nähe der Stadt
In der Nähe von Schulen

Möbel

Optional

Parken

Privat

Klimakontrolle

Klimaanlage

Zustand

Gut
Exzellent

Garten

Gemeinschaft

Energiebewertung

E