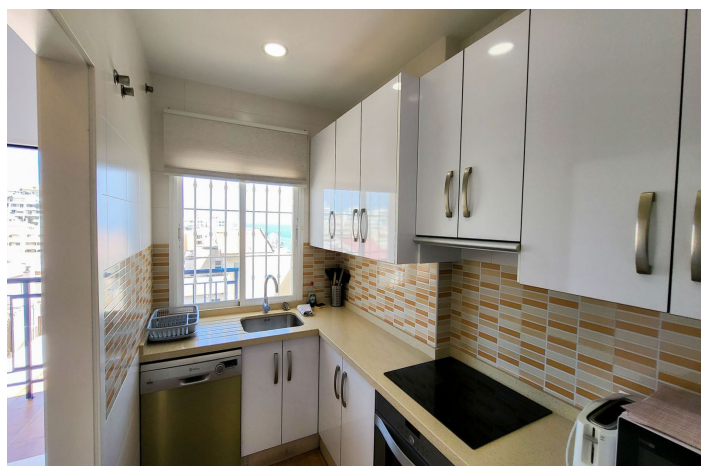




# Apartamento Planta Media en venta en Torremuelle, Benalmádena

325.000 €

Referencia: R5352829    Dormitorios: 2    Baños: 2    Construido: 60m<sup>2</sup>    Terraza: 15m<sup>2</sup>





---

## Costa del Sol, Torremuelle

### Bright Corner Apartment – Benalmádena

A delightful and well-presented 2-bedroom corner apartment situated on the second floor of a small, well-maintained building in the sought-after Torremuelle area.

The property offers:

- 2 spacious bedrooms
- 2 bathrooms
- A separate east-facing kitchen with lovely coastal views
- A bright and generous living and dining area
- A large west-facing terrace enclosed with glass curtains, perfect for year-round use, with sea views and mountain views

Additional features include:

- Private underground garage space
- Access to a well-kept community with an excellent swimming pool

Ideally located within walking distance to the beach, shops, and restaurants, this apartment is perfect as a holiday home, rental investment, or permanent residence. The current owner had it long term rented out for 1250€ a month.

Easy viewings available – keys in hand.



## Características:

### Características

Terraza Cubierta  
Ascensor  
Cerca de Transporte  
Terraza Privada  
Baño En-Suite  
Armarios Empotrados  
WiFi

### Vistas

Vistas al Mar  
Vistas a Montaña  
Vistas Urbanas  
Vistas a Calle

### Piscina

Piscina Comunitaria

### Seguridad

Recinto Cerrado

### CO2 Emission Rating

E

### Orientación

Oeste

### Posición

Cerca del Mar  
Cerca de Tiendas  
Cerca de Ciudad  
Cerca de Colegios

### Muebles

Opcionales

### Aparcamiento

Parking Privado

### Climatización

Aire Acondicionado

### Estado

Buen estado de conservación  
Excelente estado de conservación

### Jardin

Jardín Comunitario

### Calificación energética

E