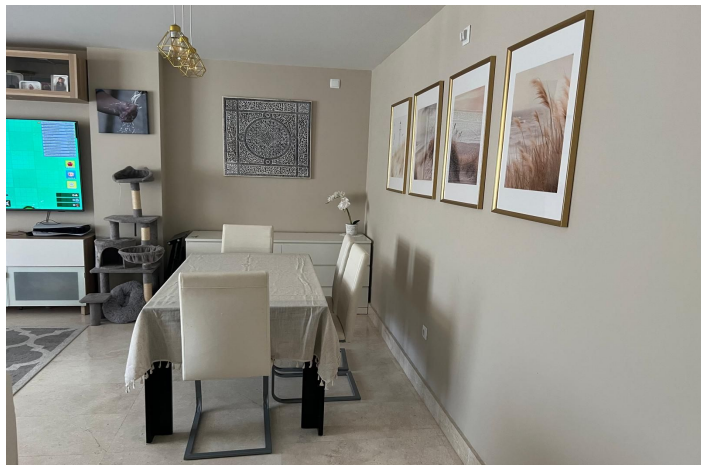




Apartment mit mittlerer Etage zum Verkauf in Punta Chullera, Manilva

393.000 €

Referenz: R5356249 Schlafzimmer: 3 Badezimmer: 2 Garten: 172m² Terrasse: 30m²





Costa del Sol, Punta Chullera

Luxury 3-Bedroom Apartment with 30 m² Terrace, Underfloor Heating & Domotics – Near Sotogrande, Estepona

Discover this spectacular apartment that perfectly combines comfort, quality and a privileged location.

This bright and elegant home features 3 spacious bedrooms, 2 modern bathrooms and a practical dressing room for extra comfort and organisation. Built to the highest standards, it includes elegant marble flooring, fitted wardrobes and an advanced climate control system with ducted hot/cold air conditioning complemented by underfloor heating for year-round wellbeing. Integrated domotics further enhance the living experience with technology and efficiency.

One of its standout features is the impressive almost 30 m² terrace with Lumon enclosure and tropical wood flooring – ideal for enjoying any season. Thanks to its excellent south orientation, the property enjoys sunlight throughout the day.

It also includes a large underground parking space and storage room for added daily convenience.

Community Amenities

Set in a meticulously maintained residential complex with beautiful communal areas, including a large outdoor swimming pool, heated indoor pool and exclusive social club.

Prime Location

Just 5 minutes from Sotogrande, close to the beach and surrounded by prestigious golf courses, with easy access to the motorway. An exclusive home where quality of life and environment come together.

Viewing highly recommended – contact us today to arrange a private viewing!



Eigenschaften:

Merkmale

Überdachte Terrasse
Aufzug
In der Nähe des Transports
Private Terrasse
Lagerraum
Badezimmer
Marmorböden
Doppelverglasung
Einstellungsschränke
W-lan
Paddel -Tennis
Tennisplatz
Versorgungsraum
Domotik
Glasfaser
Zugang für Menschen mit reduzierter
Mobilität

Ansichten

Panorama
Garten
Hof
Straße

Pool

Gemeinschaft
Erhitzt
Innenräume
Kinderpool

Garten

Gemeinschaft

Orientierung

Süden

Einstellung

Urbanisierung
In der Nähe des Meeres

Möbel

Optional

Sicherheit

Gated Complex
Alarmanlage

Klimakontrolle

Klimaanlage
Vor installierte a/c
Kalte a/c
Heiße A/C.
U/f Heizung

Zustand

Exzellent

Küche

Voll ausgestattet

Parken

Unterirdisch
Garage
Privat
Bedeckt