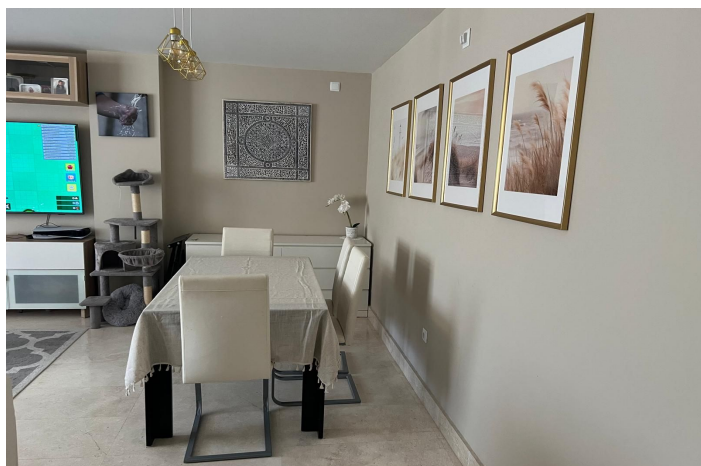
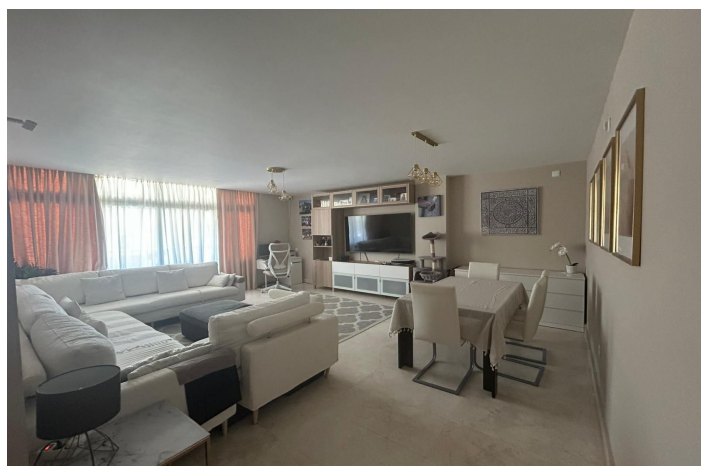




Middle Floor Apartment for sale in Punta Chullera, Manilva

393,000 €

Reference: R5356249 Bedrooms: 3 Bathrooms: 2 Build Size: 172m² Terrace: 30m²





Costa del Sol, Punta Chullera

Luxury 3-Bedroom Apartment with 30 m² Terrace, Underfloor Heating & Domotics – Near Sotogrande, Estepona

Discover this spectacular apartment that perfectly combines comfort, quality and a privileged location.

This bright and elegant home features 3 spacious bedrooms, 2 modern bathrooms and a practical dressing room for extra comfort and organisation. Built to the highest standards, it includes elegant marble flooring, fitted wardrobes and an advanced climate control system with ducted hot/cold air conditioning complemented by underfloor heating for year-round wellbeing. Integrated domotics further enhance the living experience with technology and efficiency.

One of its standout features is the impressive almost 30 m² terrace with Lumon enclosure and tropical wood flooring – ideal for enjoying any season. Thanks to its excellent south orientation, the property enjoys sunlight throughout the day.

It also includes a large underground parking space and storage room for added daily convenience.

Community Amenities

Set in a meticulously maintained residential complex with beautiful communal areas, including a large outdoor swimming pool, heated indoor pool and exclusive social club.

Prime Location

Just 5 minutes from Sotogrande, close to the beach and surrounded by prestigious golf courses, with easy access to the motorway. An exclusive home where quality of life and environment come together.

Viewing highly recommended – contact us today to arrange a private viewing!



Features:

Features

Covered Terrace
Lift
Near Transport
Private Terrace
Storage Room
Ensuite Bathroom
Marble Flooring
Double Glazing
Fitted Wardrobes
WiFi
Paddle Tennis
Tennis Court
Utility Room
Domotics
Fiber Optic
Access for people with reduced mobility

Views

Panoramic
Garden
Courtyard
Street

Pool

Communal
Heated
Indoor
Children`s Pool

Garden

Communal

Orientation

South

Setting

Urbanisation
Close To Sea

Furniture

Optional

Security

Gated Complex
Alarm System

Climate Control

Air Conditioning
Pre Installed A/C
Cold A/C
Hot A/C
U/F Heating

Condition

Excellent

Kitchen

Fully Fitted

Parking

Underground
Garage
Private
Covered