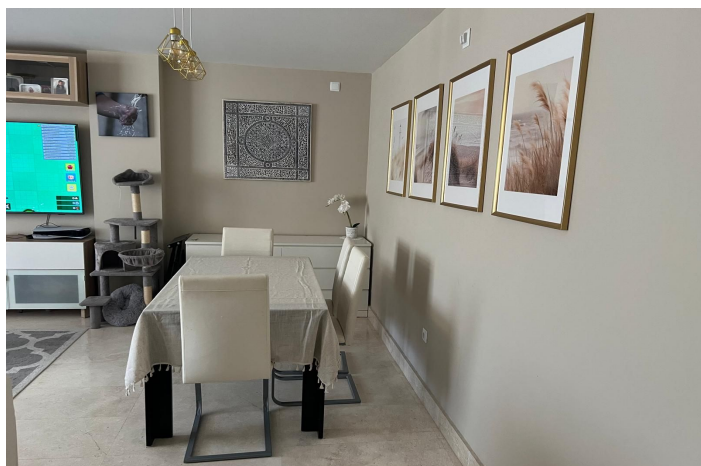
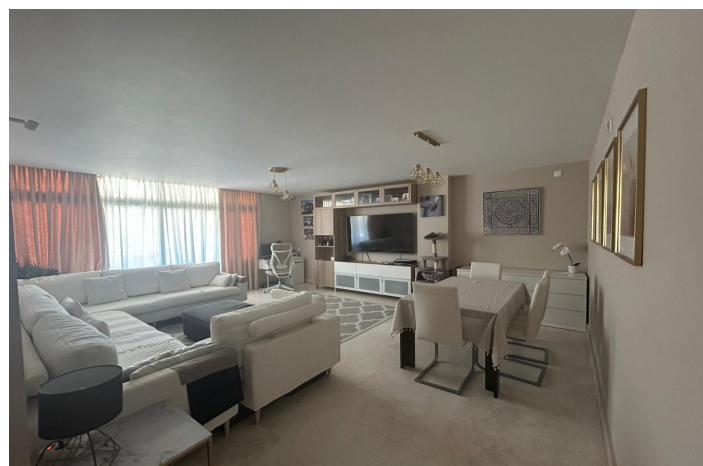




Apartamento Planta Media en venta en Punta Chullera, Manilva

393.000 €

Referencia: R5356249 Dormitorios: 3 Baños: 2 Construido: 172m² Terraza: 30m²





Costa del Sol, Punta Chullera

Luxury 3-Bedroom Apartment with 30 m² Terrace, Underfloor Heating & Domotics – Near Sotogrande, Estepona

Discover this spectacular apartment that perfectly combines comfort, quality and a privileged location.

This bright and elegant home features 3 spacious bedrooms, 2 modern bathrooms and a practical dressing room for extra comfort and organisation. Built to the highest standards, it includes elegant marble flooring, fitted wardrobes and an advanced climate control system with ducted hot/cold air conditioning complemented by underfloor heating for year-round wellbeing. Integrated domotics further enhance the living experience with technology and efficiency.

One of its standout features is the impressive almost 30 m² terrace with Lumon enclosure and tropical wood flooring – ideal for enjoying any season. Thanks to its excellent south orientation, the property enjoys sunlight throughout the day.

It also includes a large underground parking space and storage room for added daily convenience.

Community Amenities

Set in a meticulously maintained residential complex with beautiful communal areas, including a large outdoor swimming pool, heated indoor pool and exclusive social club.

Prime Location

Just 5 minutes from Sotogrande, close to the beach and surrounded by prestigious golf courses, with easy access to the motorway. An exclusive home where quality of life and environment come together.

Viewing highly recommended – contact us today to arrange a private viewing!



Características:

Características

Terraza Cubierta
Ascensor
Cerca de Transporte
Terraza Privada
Trastero - Almacén
Baño En-Suite
Suelos de Mármol
Doble acristalamiento
Armarios Empotrados
WiFi
Paddle Tennis
Pista de Tennis
Lavadero
Domotica
Fibra óptica
Access for people with reduced mobility

Vistas

Vistas Panorámicas
Vistas a Jardín
Vistas a Patio
Vistas a Calle

Piscina

Piscina Comunitaria
Con Calefacción
Piscina Cubierta
Children`s Pool

Jardin

Jardín Comunitario

Orientación

Sur

Posición

Urbanización
Cerca del Mar

Muebles

Opcionales

Seguridad

Recinto Cerrado
Alarma

Climatización

Aire Acondicionado
A/A Preinstalado
A/A Frio
A/A Caliente
Suelo Radiante

Estado

Excelente estado de conservación

Cocina

Cocina Equipada

Aparcamiento

Párking Subterráneo
Garaje
Párking Privado
Párking Cubierto