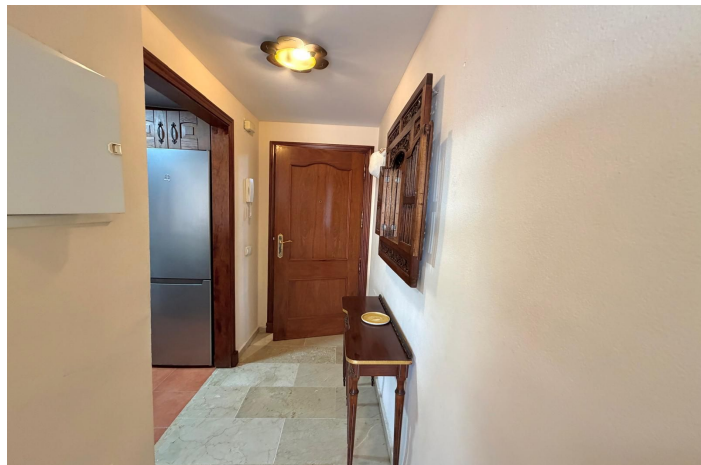




# Apartamento Planta Media en venta en Benalmádena, Benalmádena

403.000 €

Referencia: R5358034    Dormitorios: 1    Baños: 1    Construido: 70m<sup>2</sup>    Terraza: 10m<sup>2</sup>





## Costa del Sol, Benalmádena

Apartment for sale in Benalmádena with sea views

Apartment for sale in an excellent location, just a few meters from the beach, in one of the most sought-after areas of Benalmádena Costa.

The property has 70 m<sup>2</sup>, distributed as follows:

- 1 bedroom with built-in wardrobe
- 1 fully fitted bathroom with walk-in shower
- Fully furnished and equipped kitchen with appliances
- Bright living room with direct access to the terrace 10m<sup>2</sup>

The apartment features a glazed terrace with Lumon system, ideal for year-round use, offering sea views and a south-facing orientation, ensuring plenty of natural light.

Located in a private residential complex, with:

- Communal swimming pool
- Garden areas
- Communal parking

Excellent location:

- Just a few minutes' walk from the beach
- Close to supermarkets, restaurants, and shops
- Well connected by public transport (buses and commuter train)
- Easy access to the motorway

Ideal as a permanent residence, holiday home, or investment with high rental potential.

Legal notice:

In accordance with Andalusian Decree 218/2005 of October 11th, regulating consumer information in the sale and rental of properties in Andalusia, clients are informed that notary fees, land registry fees, Property Transfer Tax (I.T.P.), and other costs inherent to the purchase or rental are not included in the price.

Agency fees are included in the price.

The information provided, including surfaces, prices, conditions, and availability of the property, is for guidance only and does not constitute a binding contractual offer. It may be subject to changes without prior notice, and availability should be confirmed at the time of enquiry.

Energy Performance Certificate in process.



## Características:

### Características

Ascensor  
Cerca de Transporte  
Terraza Privada  
Armarios Empotrados

### Posición

Lado de la Playa  
Cerca de Colegios

### Cocina

Cocina Equipada

### Aparcamiento

Párking Comunitario

### Orientación

Sur

### Estado

Buen estado de conservación

### Jardin

Jardín Comunitario

### Vistas

Vistas a Jardín  
Vistas a Piscina  
Vistas a Calle

### Piscina

Piscina Comunitaria

### Seguridad

Recinto Cerrado