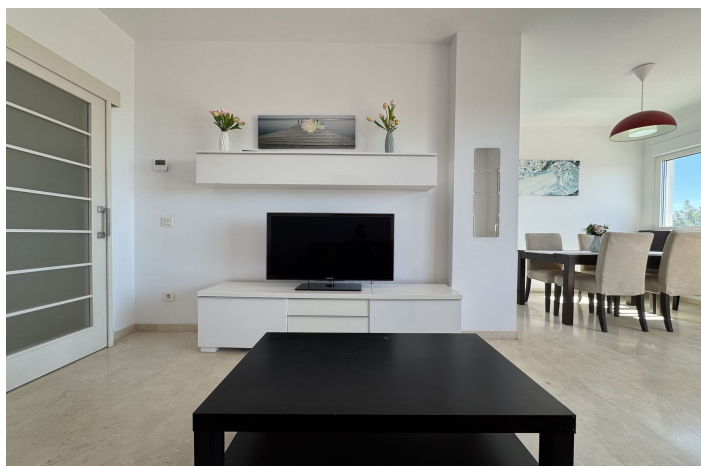




Apartamento Planta Media en venta en Estepona, Estepona

345.000 €

Referencia: R5351503 Dormitorios: 2 Baños: 2 Terreno: 10m² Construido: 80m² Terraza: 28m²





Costa del Sol, Estepona

Stunning Frontline Golf Apartment with Panoramic Sea Views - Valle Romano - Tourist License.

Experience the perfect blend of tranquility, views, and convenience in this exceptional frontline golf property located on Hole 9 of Valle Romano Golf.

This beautifully maintained apartment offers two well-positioned bedrooms: one overlooking the golf course and the other facing the garden, ensuring privacy and comfort. With both a golf-facing terrace and a garden area by the kitchen, you'll enjoy sunlight from morning through to evening.

The property features:

- 2 spacious bedrooms and 2 bathrooms (one en-suite)
- Bright living spaces with panoramic golf and sea views
- Fully equipped kitchen with a separate utility room (including electric water boiler and washing machine)
- Hot and cold air conditioning throughout
- Immaculate condition – ready to move in

Additional highlights include:

- Private underground parking space
- Lift access – no stairs required
- Communal swimming pool within a well-maintained urbanisation
- Peaceful surroundings with guaranteed open views (no future construction in front)
- Just steps away from the golf club and its restaurant

A rare opportunity for both personal enjoyment and investment: the property comes with a tourist license, making it ideal for short-term rentals.

Enjoy silence, sunshine, and spectacular views in one of the Costa del Sol's most sought-after golf locations.



Características:

Características

Terraza Cubierta
Ascensor
Terraza Privada
Baño En-Suite
Suelos de Mármol
Doble acristalamiento
Armarios Empotrados
WiFi
Domotica
Restaurant
Fibra óptica
Access for people with reduced mobility

Vistas

Vistas a Montaña
Vistas Panorámicas
Vistas al Campo
Vistas a Golf

Piscina

Piscina Comunitaria

Jardín

Jardín Comunitario
Jardín Privado
Jardín Paisajístico
Jardín de fácil mantenimiento

Servicios Públicos

Electricidad
Agua Potable
Gas
Paneles Solares Térmicas

Orientación

Sur
Orientación Sureste

Posición

Cerca de Puerto
Urbanización
Cerca del Mar
Cerca de Tiendas
Cerca de Ciudad
Cerca de Colegios
Campo
Cerca de los Bosques
Cerca de Marina

Muebles

Completamente Amueblada

Seguridad

Recinto Cerrado
Seguridad de 24 horas
Persianas Eléctricas

Categoría

Casas de vacaciones
Inversion
Golf
Lujo
Reventa
Contemporáneo

Climatización

Aire Acondicionado
A/A Frio
A/A Caliente

Estado

Excelente estado de conservación

Cocina

Cocina Equipada

Aparcamiento

Parking Subterráneo
Garaje
Parking Privado
Parking Cubierto