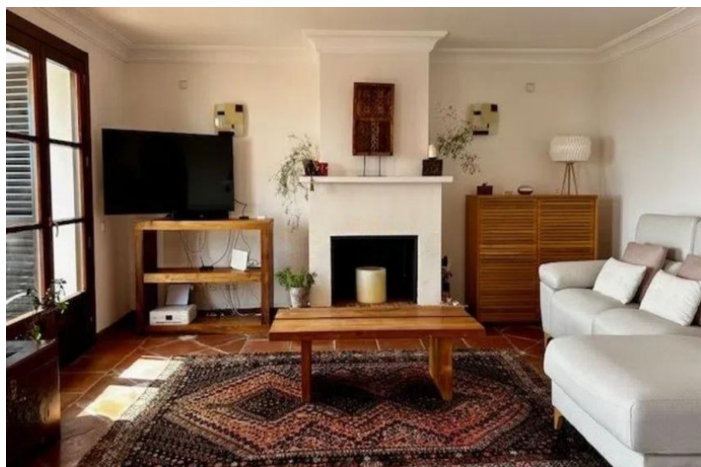




Townhouse for sale in Benahavís, Benahavís

545.000 €

Referencia: R5026852 Dormitorios: 2 Baños: 2 Construido: 180m² Terraza: 40m²





Costa del Sol, Benahavís

This semi-detached, south-facing townhouse with abundant natural light spans 184 square meters and includes a garage and storage.

It features brand new Daikin air conditioning, pure water filtration for drinking and washing and mosquito screens throughout. The house is located in the picturesque village of La Heredia within Monte Mayor, this home offers peace, privacy, and a unique connection to nature—just a 10-minute scenic drive to the coast.

Downstairs:

Upon entering, a convenient toilet is located on your right. The generous salon features a large fireplace and expansive windows, filling the space with light and offering panoramic views of the surrounding nature and the Mediterranean. Adjacent to the salon is a bright dining room with equally stunning views. The kitchen is fully equipped with Samsung appliances and offers a practical adjoining laundry room. Step out onto the veranda—a perfect space for relaxing or al fresco dining while soaking in the scenery.

Upstairs:

A spacious landing connects the two bedrooms, each with its own en-suite bathroom featuring both a bath and a shower. Both bedrooms include built-in wardrobes and Juliet balconies with spectacular views of the natural surroundings.

Community Amenities:

- Community pool for residents
- 24-hour gated security
- On-site café and tennis courts
- Direct access to hiking trails and rich wildlife., Benahavís, Costa del Sol.

2 Bedrooms, 2 Bathrooms, Built 180 m², Terrace 40 m².

Setting : Mountain Pueblo, Close To Shops, Close To Town, Close To Schools, Close To Forest, Urbanisation.

Orientation : South.

Condition : Excellent.

Pool : Communal.

Climate Control : Air Conditioning, Hot A/C, Cold A/C, Fireplace.

Views : Mountain, Golf, Country.

Features : Covered Terrace, Private Terrace, WiFi, Tennis Court, Storage Room, Utility Room, Ensuite Bathroom, Double Glazing.

Furniture : Part Furnished.

Kitchen : Fully Fitted.

Garden : Communal.

Security : Gated Complex, 24 Hour Security.

Parking : Underground, Garage, Covered, Private.

Category : Resale.



Características:

Características

Terraza Cubierta
Terraza Privada
Trastero - Almacén
Baño En-Suite
Doble acristalamiento
WiFi
Pista de Tenis
Lavadero

Vistas

Vistas a Montaña
Vistas al Campo
Vistas a Golf

Piscina

Piscina Comunitaria

Jardin

Jardín Comunitario

Categoría

Reventa

Orientación

Sur

Posición

Urbanización
Cerca de Tiendas
Cerca de Ciudad
Cerca de Colegios
Pueblo de Montaña
Cerca de los Bosques

Muebles

Parcialmente Amueblada

Seguridad

Recinto Cerrado
Seguridad de 24 horas

Climatización

Aire Acondicionado
A/A Frio
A/A Caliente
Chimenea

Estado

Excelente estado de conservación

Cocina

Cocina Equipada

Aparcamiento

Párking Subterráneo
Garaje
Párking Privado
Párking Cubierto