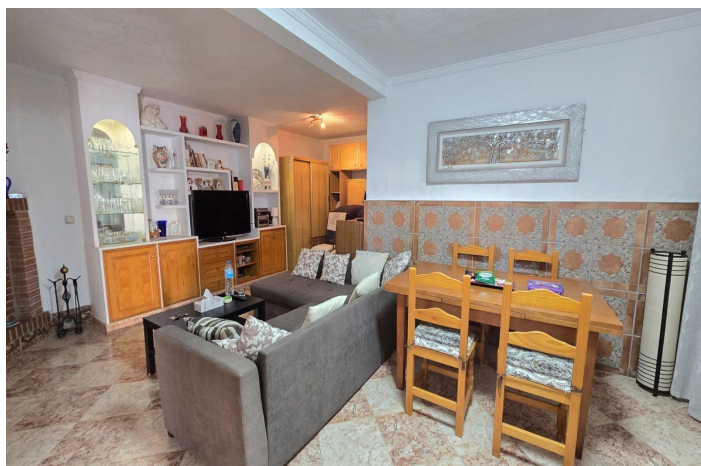




Villa - Chalet en venta en Arroyo de la Miel, Benalmádena

550.000 €

Referencia: R5356765 Dormitorios: 2 Baños: 3 Terreno: 392m² Construido: 154m² Terraza: 238m²





Costa del Sol, Arroyo de la Miel

⋮⋮**IMPORTANT:** Some images in this listing have been created using Artificial Intelligence to demonstrate the property's potential following its comprehensive renovation.

⋮We present this exquisitely renovated duplex located in the highly sought-after area of Montemar, Torremolinos. This home is a sanctuary of natural light where the Mediterranean horizon becomes part of your daily life. It boasts an unbeatable strategic location: just 450 meters from the beach, 700 meters from the train station, and 300 meters from local markets.

⋮**Spacious Layout and Elegant Design**

⋮The property, move-in ready, offers 150 m² of built area designed with a focus on sophistication and comfort:

⋮**Bedrooms and Bathrooms:** 3 spacious bedrooms, 2 full bathrooms, and an additional guest toilet.

⋮**Living Area:** A large living-dining room flooded with natural light and opening up to breathtaking blue sea views.

⋮**Kitchen:** Fully equipped contemporary kitchen combining style and practicality.

⋮**Private Outdoor Spaces:** Over 65 m² of exterior areas perfect for Mediterranean living:

⋮36.40 m² main covered terrace.

⋮11.5 m² balcony.

⋮16.20 m² side patio.

⋮1.5 m² private bedroom terrace.

⋮**Exclusivity and Amenities**

⋮Situated within a private development with a limited number of residents, the property ensures a quiet and exclusive environment. The complex features a swimming pool and well-maintained communal gardens. Furthermore, the property includes two parking spaces and a storage room, essential assets for a comfortable lifestyle.

⋮With high-quality finishes and sea views from the living room, bedrooms, and main terrace, this duplex is the ideal choice for those seeking a distinguished home on the Costa del Sol.⋮

⋮

⋮

⋮

⋮

⋮

⋮

⋮

⋮

⋮

⋮

⋮

⋮



Características:

Características

Terraza Cubierta
Cerca de Transporte
Terraza Privada
Trastero - Almacén
Baño En-Suite
Solario
Aptmnt. Huéspedes
Lavadero
Barbacoa
Servicio de Autobuses

Posición

Cerca de Ciudad
Cerca de Colegios
Pueblo

Jardín

Jardín Privado

Servicios Públicos

Electricidad
Agua Potable

Orientación

Norte
Este
Sur
Oeste

Estado

Necesita Reformas

Seguridad

Recinto Cerrado

Categoría

Inversion

Vistas

Vistas al Mar
Vistas a Montaña
Vistas a Jardín
Vistas Urbanas

Piscina

Piscina Privada

Aparcamiento

Párking Privado