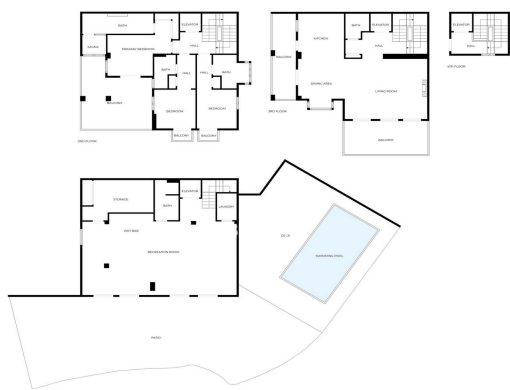




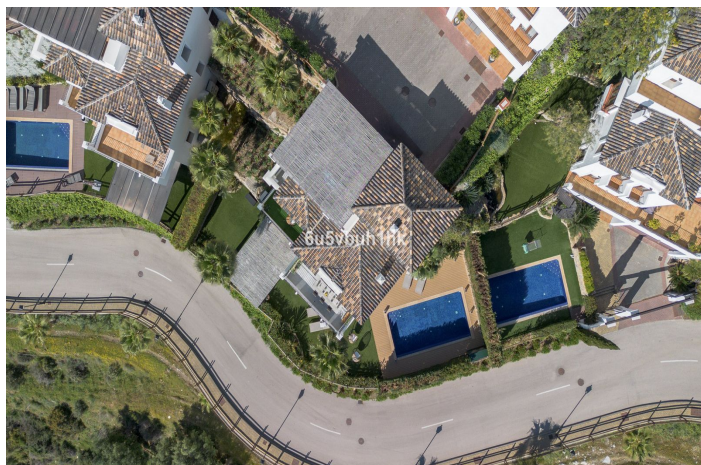
Villa - Chalet en venta en Benahavís, Benahavís

1.350.000 €

Referencia: R5361175 Dormitorios: 3 Baños: 5 Terreno: 474m² Construido: 336m² Terraza: 106m²



SIZES ARE APPROXIMATE, ACTUAL MAY VARY.





Costa del Sol, Benahavís

Set within the exclusive gated community of Benahavís Hills Country Club, this elegant villa offers exceptional privacy, security, and uninterrupted panoramic views over the surrounding mountains and the Mediterranean Sea. Positioned in a quiet cul-de-sac with no properties in front, every room in the home enjoys open, elevated views.

Upon arrival, a private two-car parking area welcomes you, immediately framing the natural beauty that defines this property. The entrance level provides access to both a staircase and a lift.

The main living level features a bright and spacious open-plan layout, combining a refined living area with fireplace, dining space, and a recently renovated modern kitchen. Large windows and direct access to two terraces create an effortless indoor-outdoor lifestyle, ideal for both relaxing and entertaining. A guest toilet is also conveniently located on this floor.

The bedroom level comprises three en-suite bedrooms. The master suite enjoys access to a private terrace and features a sauna with views, creating a true retreat. The additional two bedrooms, both with private balconies, share the same spectacular outlook and natural light.

On the lower level, the entertainment area offers a second living room, a fully equipped kitchen, bathroom, and additional storage. This area opens directly onto the garden and pool.

The outdoor area is designed for maximum enjoyment and privacy, with lounge and dining areas, a heated swimming pool, and an outdoor shower.

The property is presented in excellent condition and combines comfort, functionality, and understated luxury in Benahavís



Características:

Características

Ascensor
Terraza Privada
TV Satélite
Trastero - Almacén
Baño En-Suite
Suelos de Mármol
Doble acristalamiento
Armarios Empotrados
Solario
Sauna
Lavadero
Sótano

Vistas

Vistas a Montaña
Vistas Panorámicas
Vistas a Bosques

Piscina

Con Calefacción
Piscina Privada

Jardín

Jardín Privado
Jardín de fácil mantenimiento

Servicios Públicos

Electricidad
Agua Potable
Teléfono

Orientación

Este
Sur
Orientación Sureste

Posición

Cerca de Golf
Urbanización
Cerca de Ciudad
Cerca de Colegios
Cerca de los Bosques

Muebles

Opcionales

Seguridad

Recinto Cerrado
Seguridad de 24 horas
Alarma
Persianas Eléctricas

Categoría

Lujo
Contemporáneo

Climatización

Aire Acondicionado
A/A Frio
A/A Caliente
Chimenea
Calefacción Central.

Estado

Buen estado de conservación
Reformado Recientemente

Cocina

Cocina Equipada

Aparcamiento

Garaje
Párking Privado
Párking Cubierto
More Than One