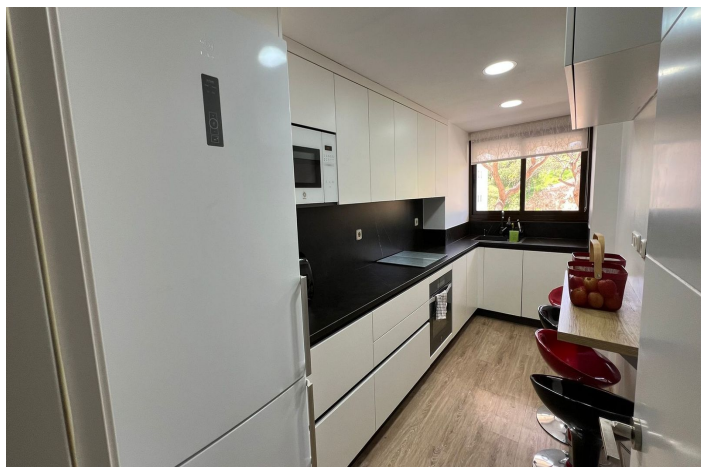




Apartamento Planta Media en venta en Estepona, Estepona

445.000 €

Referencia: R5360725 Dormitorios: 3 Baños: 2 Construido: 115m² Terraza: 35m²





Costa del Sol, Estepona

We present this fantastic home located on the first (1st) floor of the residential complex 'SETHOME AV. PUERTA DEL MAR', built in 2008.

This property has a built area of 147m² and a usable area of 100m². The home consists of 3 very spacious and bright bedrooms with access to the terrace; 2 full bathrooms, one common and the other en-suite; built-in wardrobes in all bedrooms, a dressing room in the master bedroom; garage and storage room.

The community offers landscaped areas, landscaped gardens, a swimming pool with sunbed area, and a paddle tennis court.

Layout: Direct access through the entrance leads to a living-dining room that ventilates and illuminates directly through the main facade, and provides access to a sinusoidal-shaped terrace, a kitchen that provides access and ventilation through a laundry area; finally, the entrance leads to a hallway distributing to two double bedrooms that ventilate and illuminate through the main facade and provide access to two terraces, a master bedroom, and a full bathroom that ventilates through the lobby of its floor. The master bedroom has a dressing room.

The home includes a garage annex of 11.82 m² and a storage room of 5.86m².

The area features parks and public green spaces next to the residential complex, supermarkets, schools, daycare, institute, pharmacy, restaurants, and all kinds of services and shops around. Additionally, it is very close to the Port of Estepona and has easy and nearby access to the highway.



Características:

Características

Terraza Cubierta
Ascensor
Cerca de Transporte
Terraza Privada
Trastero - Almacén
Baño En-Suite
Suelos de Mármol
Doble acristalamiento
Armarios Empotrados
WiFi
Paddle Tennis
Fibra óptica
Access for people with reduced mobility

Vistas

Vistas a Montaña
Vistas Panorámicas
Vistas al Campo
Vistas Urbanas

Piscina

Piscina Comunitaria

Jardín

Jardín Comunitario
Jardín Paisajístico

Servicios Públicos

Electricidad
Agua Potable
Teléfono

Orientación

Oeste

Posición

Cerca de Puerto
Urbanización
Cerca del Mar
Cerca de Tiendas
Cerca de Colegios
Ciudad

Muebles

Opcionales

Seguridad

Recinto Cerrado
Portero Automático

Categoría

Casas de vacaciones
Inversión
Urge venta
Lujo
Contemporáneo

Climatización

Aire Acondicionado

Estado

Buen estado de conservación
Excelente estado de conservación

Cocina

Cocina Equipada

Aparcamiento

Parking Subterráneo
Garaje
Parking Privado
Parking Cubierto
Parking Comunitario