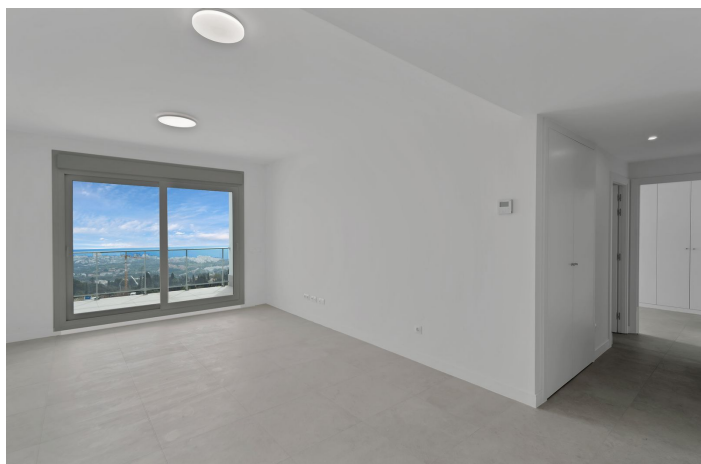




Apartamento Planta Media en venta en Benalmadena Pueblo, Benalmádena

449.000 €

Referencia: R5361490 Dormitorios: 2 Baños: 2 Construido: 93m² Terraza: 27m²





Costa del Sol, Benalmadena Pueblo

Discover your new home in the heart of the Costa del Sol!

This stunning, brand-new apartment boasts 2 spacious bedrooms and 2 modern bathrooms, designed for comfort and style. It's undeniable highlight is the terrace with breathtaking sea views, perfect for enjoying relaxing moments outdoors.

- 93m² built area.
- 23m² built area of the terrace.
- 69m² usable area.

The property has been customized with many extras, including a premium kitchen, top-of-the-line appliances, fully tiled bathrooms with shower enclosures, electric blinds, and more. The total value is over €10,000.

Located in the exclusive Residencial Blossom II, just steps away from the charming Benalmádena Pueblo, this home combines the tranquility of a privileged setting with proximity to all amenities. The fully gated complex ensures security and privacy with surveillance cameras and concierge service.

Plus, you'll have access to top-notch facilities: a refreshing community pool, a fully equipped gym, and a sophisticated gastroteca for sharing special moments with family and friends.

Experience a modern, elegant, and Mediterranean lifestyle in this apartment that has it all!



Características:

Características

Terraza Cubierta
Ascensor
Cerca de Transporte
Terraza Privada
Trastero - Almacén
Baño En-Suite
Doble acristalamiento
Armarios Empotrados
Gimnasio
Access for people with reduced mobility

Vistas

Vistas al Mar
Vistas a Montaña
Vistas Panorámicas

Piscina

Piscina Comunitaria

Jardín

Jardín Comunitario

Calificación energética

B

Orientación

Orientación Sureste

Posición

Cerca de Golf
Cerca de Tiendas
Cerca de Colegios
Pueblo
Cerca de los Bosques

Muebles

Sin Amueblar

Seguridad

Recinto Cerrado
Persianas Eléctricas
Portero Automático

CO2 Emission Rating

B

Climatización

Aire Acondicionado
A/A Frio
A/A Caliente

Estado

Excelente estado de conservación
Nueva Construcción

Cocina

Cocina Equipada

Aparcamiento

Párking Subterráneo
Garaje
Párking Comunitario
More Than One