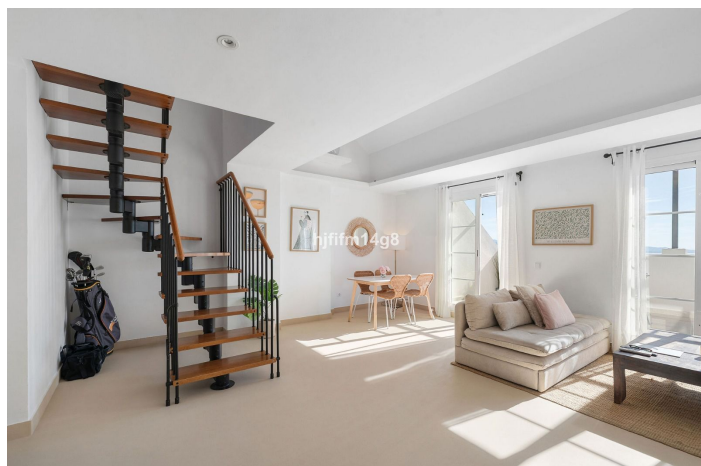
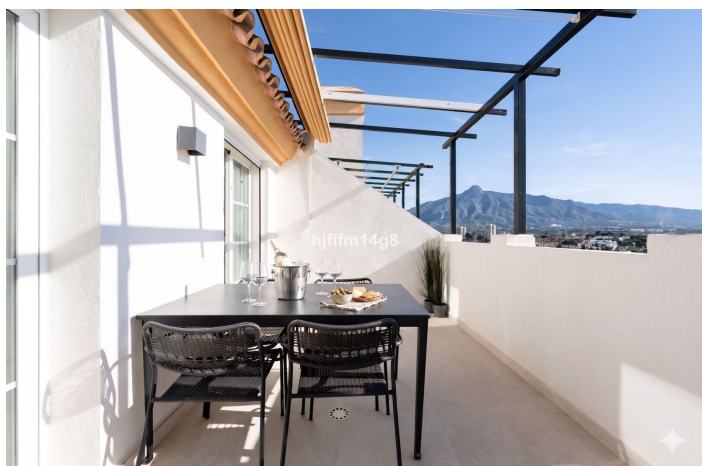
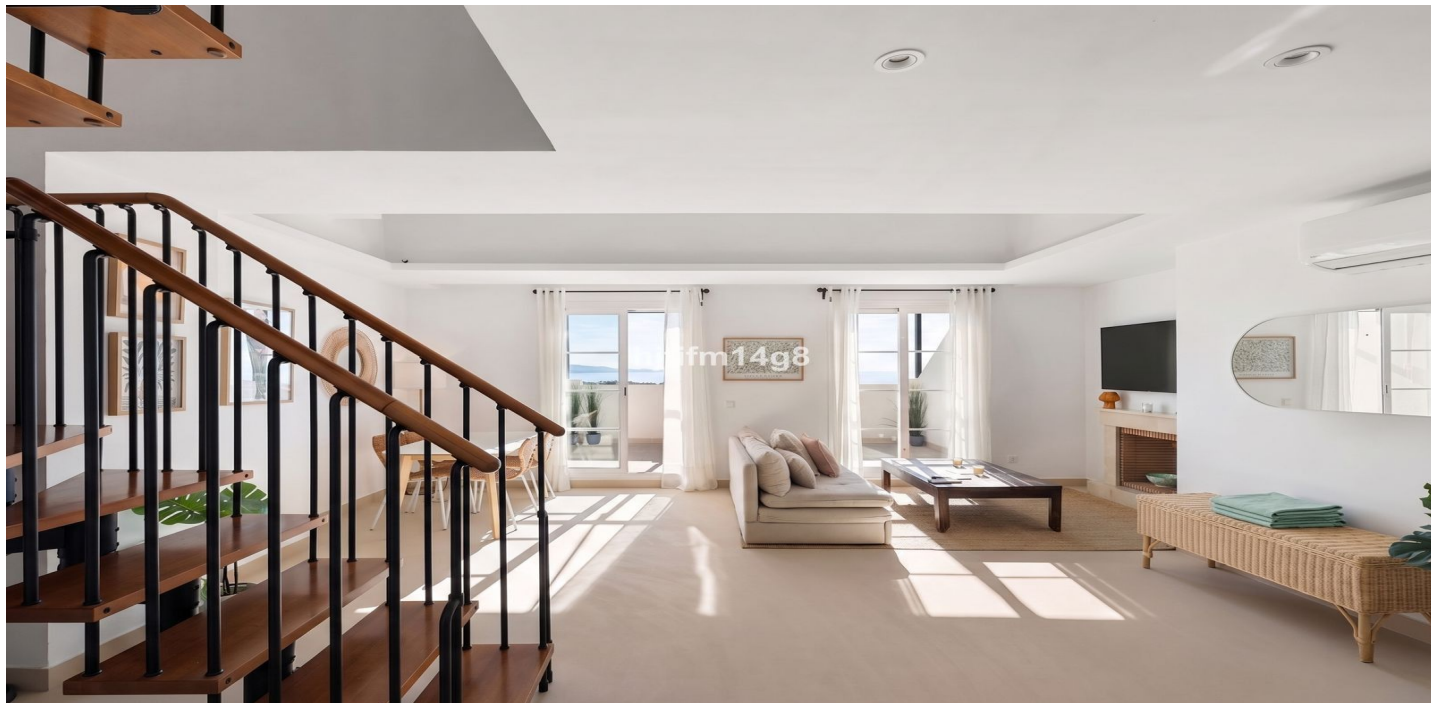




# Penthouse Duplex zum Verkauf in Nueva Andalucía, Marbella

595.000 €

Referenz: R5360785 Schlafzimmer: 2 Badezimmer: 2 Garten: 96m<sup>2</sup> Terrasse: 31m<sup>2</sup>





---

## Costa del Sol, Nueva Andalucía

Discover this bright and beautifully presented duplex penthouse in the sought-after Señorío de Aloha, located in the heart of Nueva Andalucía. Positioned on the top floor of a secure, well-maintained community, this property offers an exceptional blend of comfort, privacy, and breathtaking views across the Mediterranean and La Concha mountain.

The apartment features two spacious bedrooms and two modern bathrooms, complemented by a stylish living area designed for both relaxation and entertaining. Recently refurbished, the home presents a fresh, contemporary feel while retaining a warm and inviting atmosphere.

The standout feature is the generous east-facing terrace, offering spectacular panoramic views and abundant morning sunshine. It's an ideal setting for al fresco breakfasts or evening drinks, making the most of Marbella's outdoor lifestyle.

The kitchen maintains its charming Andalusian character while providing full functionality—perfect for everything from casual breakfasts to relaxed dinners with family and friends.

Residents of Señorío de Aloha enjoy access to three beautifully landscaped swimming pool areas surrounded by tropical gardens, as well as a padel court for an active lifestyle.

The property also includes private parking.

Ideally located in Nueva Andalucía, the penthouse is within walking distance of Centro Plaza and a large supermarket, and just minutes from golf courses, sandy beaches, and the vibrant marina of Puerto Banús.

This is a rare opportunity to acquire a stylish penthouse in Señorío de Aloha, Nueva Andalucía—perfect as a permanent residence, holiday home, or investment property in one of Marbella's most desirable locations.



## Eigenschaften:

### Merkmale

Aufzug

In der Nähe des Transports

Private Terrasse

Einstellungsschränke

Paddel -Tennis

Versorgungsraum

### Ansichten

Meer

Berg

Garten

Pool

Straße

### Pool

Gemeinschaft

### Sicherheit

Gated Complex

### CO2 -Emissionsbewertung

E

### Orientierung

Ost

### Einstellung

In der Nähe von Golf

In der Nähe des Hafens

In der Nähe des Meeres

In der Nähe von Geschäften

In der Nähe von Schulen

### Küche

Teilweise montiert

### Parken

Gemeinschaft

### Klimakontrolle

Klimaanlage

Kamin

### Zustand

Exzellent

Kürzlich renoviert

### Garten

Gemeinschaft

### Energiebewertung

E