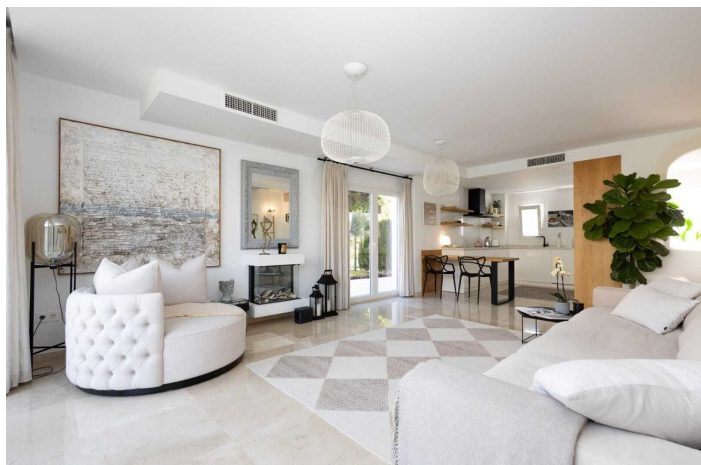
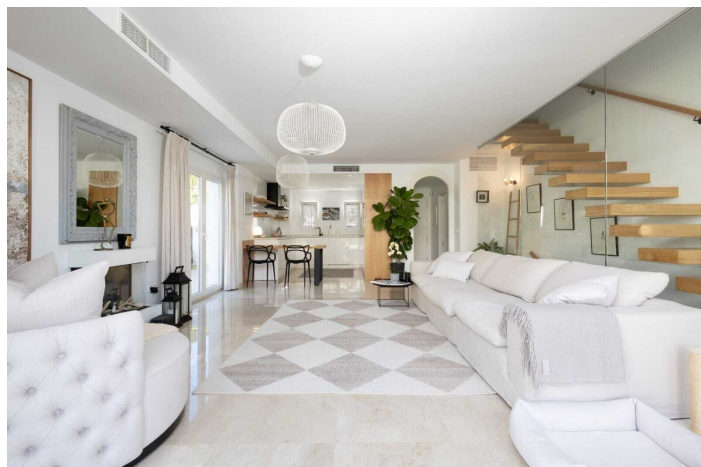
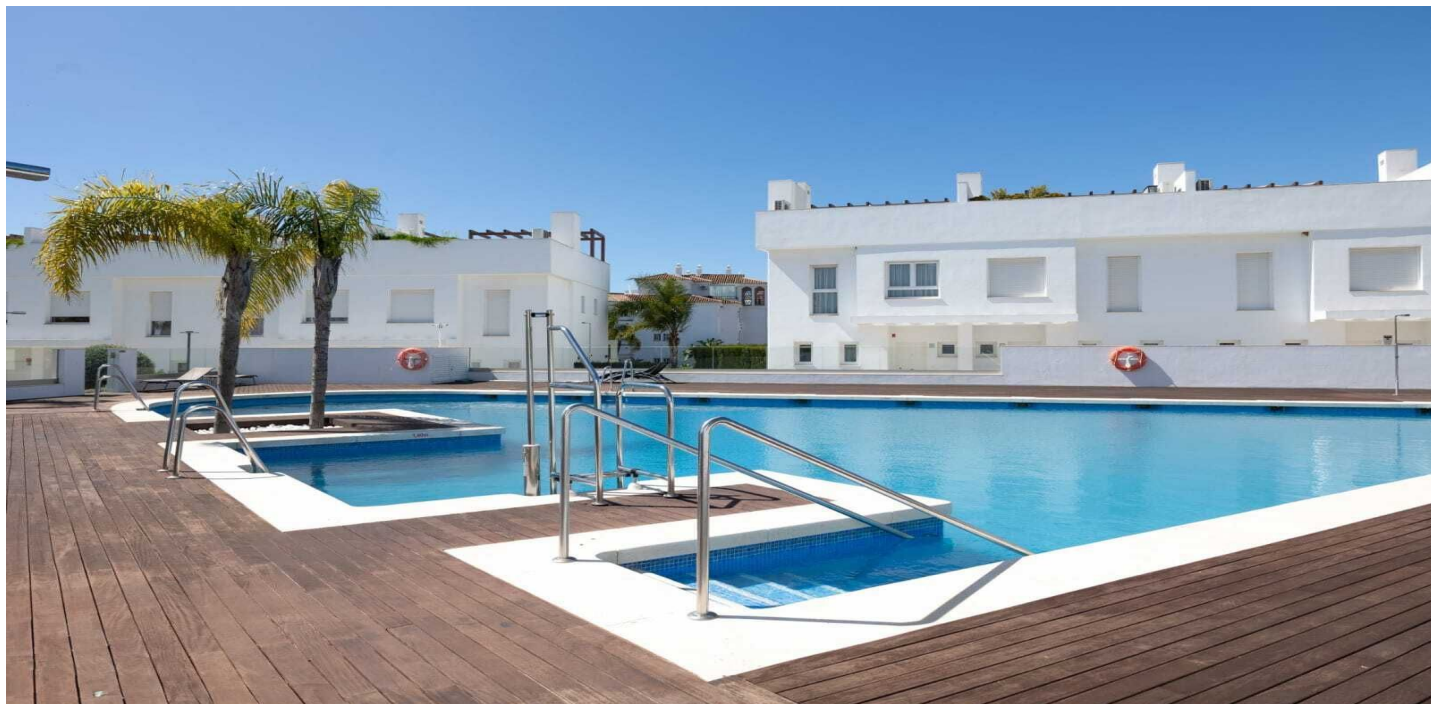




Pareada en venta en Calahonda, Mijas

775.000 €

Referencia: R5362729 Dormitorios: 4 Baños: 3 Terreno: 90m² Construido: 195m² Terraza: 60m²





Costa del Sol, Calahonda

Exclusive Semi-Detached House in Calahonda – Mijas Costa

Discover this elegant contemporary semi-detached home, located in an exclusive residential area of Calahonda, just minutes from the sea and surrounded by all essential amenities, including shops, schools, and leisure facilities.

Built in 2019 and recently renovated, the property offers a perfect balance of style, comfort, and functionality. With a built area of 264 m², it stands out for its spacious layout and excellent natural light, thanks to its south, southeast, and southwest orientation.

The home features 4 spacious bedrooms and 3 modern bathrooms, making it ideal for families or as a high-end holiday residence on the Costa del Sol.

The main floor welcomes you with a sophisticated open-plan living and dining area, flooded with natural light and seamlessly connected to a generous 69 m² terrace and a private 90 m² garden—perfect for enjoying the Mediterranean lifestyle all year round.

The kitchen has been fully renovated and fitted with high-end appliances. In addition, the basement has been refurbished, offering a versatile space that can be adapted as a gym, office, games room, or entertainment area.

Key Features:

Built area: 264 m²

Terrace: 69 m²

Private garden: 90 m²

4 bedrooms | 3 bathrooms

Orientation: South, Southeast & Southwest

Air conditioning

Communal swimming pool

Garden views

Covered terrace

Fully equipped kitchen

Excellent condition

Ideally located, this property represents a fantastic opportunity as a permanent residence, holiday home, or investment with high rental potential in one of the most sought-after areas of the Costa del Sol.

Agency fees are included in the sale price.

In accordance with Andalusian Decree 218/2005, notary fees, Land Registry costs, and VAT (if applicable) are not included in the price. Property Transfer Tax (ITP) of 7% will apply, in addition to notary fees (approx. 0.3%–0.5%) and Land Registry fees (approx. 0.1%–0.3%) calculated on the sale price.

The information provided is for guidance only, is non-contractual, and may be subject to updates or changes.

To confirm details or obtain the latest information, we recommend contacting us.



Características:

Características

Terraza Privada
Trastero - Almacén
Armarios Empotrados
Solario

Vistas

Vistas a Jardín
Vistas Urbanas

Piscina

Piscina Comunitaria

Jardín

Jardín Comunitario

Servicios Públicos

Electricidad
Agua Potable

Orientación

Oeste

Posición

Urbanización

Muebles

Sin Amueblar

Seguridad

Recinto Cerrado

Categoría

Casas de vacaciones
Inversion
Reventa
Contemporáneo

Climatización

Aire Acondicionado

Estado

Buen estado de conservación

Cocina

Cocina Equipada

Aparcamiento

Parking Subterráneo
Garaje