



Penthouse for sale in Benalmádena, Benalmádena

571,400 €

Reference: RS79576 Bedrooms: 3 Bathrooms: 2 Build Size: 121m²



Descargo de responsabilidad: Las imágenes y el contenido escrito de este folleto son meramente orientativos y, por lo tanto, pueden sufrir modificaciones por razones técnicas, legales o de otro tipo. El mobiliario reflejado es puramente decorativo y no constituye un documento contractual. El equipamiento de las viviendas se realizará de acuerdo con el correspondiente pliego de condiciones de calidad.
Disclaimer: The images and written content of this brochure are for guidance only and are therefore subject to change for technical, legal or other reasons. The furnishings shown are purely decorative and do not constitute a contractual document. The furnishing of the flats will be carried out in accordance with the corresponding quality specifications.



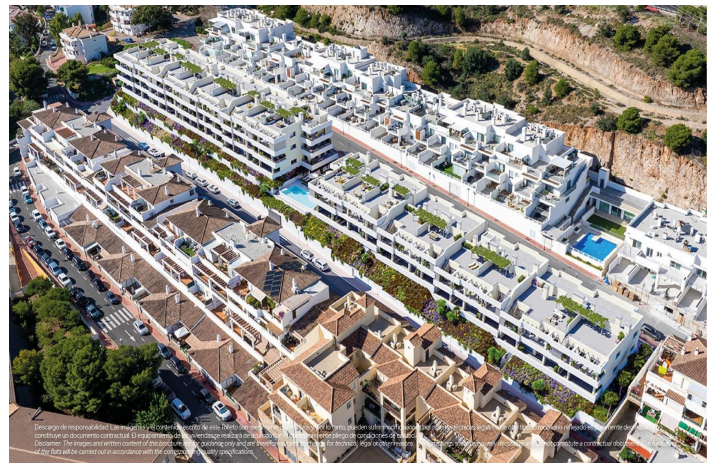
Descargo de responsabilidad: Las imágenes y el contenido escrito de este folleto son meramente orientativos y, por lo tanto, pueden sufrir modificaciones por razones técnicas, legales o de otro tipo. El mobiliario reflejado es puramente decorativo y no constituye un documento contractual. El equipamiento de las viviendas se realizará de acuerdo con el correspondiente pliego de condiciones de calidad.
Disclaimer: The images and written content of this brochure are for guidance only and are therefore subject to change for technical, legal or other reasons. The furnishings shown are purely decorative and do not constitute a contractual document. The furnishing of the flats will be carried out in accordance with the corresponding quality specifications.



Descargo de responsabilidad: Las imágenes y el contenido escrito de este folleto son meramente orientativos y, por lo tanto, pueden sufrir modificaciones por razones técnicas, legales o de otro tipo. El mobiliario reflejado es puramente decorativo y no constituye un documento contractual. El equipamiento de las viviendas se realizará de acuerdo con el correspondiente pliego de condiciones de calidad.
Disclaimer: The images and written content of this brochure are for guidance only and are therefore subject to change for technical, legal or other reasons. The furnishings shown are purely decorative and do not constitute a contractual document. The furnishing of the flats will be carried out in accordance with the corresponding quality specifications.



Descargo de responsabilidad: Las imágenes y el contenido escrito de este folleto son meramente orientativos y, por lo tanto, pueden sufrir modificaciones por razones técnicas, legales o de otro tipo. El mobiliario reflejado es puramente decorativo y no constituye un documento contractual. El equipamiento de las viviendas se realizará de acuerdo con el correspondiente pliego de condiciones de calidad.
Disclaimer: The images and written content of this brochure are for guidance only and are therefore subject to change for technical, legal or other reasons. The furnishings shown are purely decorative and do not constitute a contractual document. The furnishing of the flats will be carried out in accordance with the corresponding quality specifications.



Descargo de responsabilidad: Las imágenes y el contenido escrito de este folleto son meramente orientativos y, por lo tanto, pueden sufrir modificaciones por razones técnicas, legales o de otro tipo. El mobiliario reflejado es puramente decorativo y no constituye un documento contractual. El equipamiento de las viviendas se realizará de acuerdo con el correspondiente pliego de condiciones de calidad.
Disclaimer: The images and written content of this brochure are for guidance only and are therefore subject to change for technical, legal or other reasons. The furnishings shown are purely decorative and do not constitute a contractual document. The furnishing of the flats will be carried out in accordance with the corresponding quality specifications.



Costa del Sol, Benalmádena

New Build Apartments for Sale in Benalmádena Pueblo Costa del Sol - Modern Residential Development just 3 km from beach - This exclusive new build development offers 70 contemporary homes with 2 and 3 bedrooms, each featuring 2 full bathrooms and located just 3 km from the Mediterranean Sea. Choose between ground-floor apartments with private gardens, middle-floor units with spacious terraces, or penthouses boasting panoramic sea views. All residences are designed for comfort and functionality, with open-plan living spaces that connect seamlessly to large terraces, perfect for enjoying the mild Costa del Sol climate - Stylish Interiors and Premium Features - Every home includes a fully fitted kitchen with high-end appliances, bright and spacious living rooms with direct terrace access, and modern finishes throughout. Kitchens with central islands and open layouts integrate harmoniously with the living areas, maximizing space and natural light. Penthouses offer expansive terraces ideal for entertaining and taking in breathtaking views of the Mediterranean - Exclusive Amenities for a Mediterranean Lifestyle - This private residential complex provides everything you need for leisure and well-being, including a swimming pool, a fully equipped gym, and a gastroteca for social gatherings. Designed with attention to detail, the development combines modern architecture with landscaped communal spaces, creating a serene environment for residents to relax and unwind - Prime Location in Benalmádena Pueblo - Situated in the charming village of Benalmádena Pueblo, the development offers a perfect balance between a tranquil setting and easy access to urban amenities. Supermarkets, medical centers, schools, sports facilities, and leisure areas are all within reach. Benalmádena, one of the Costa del Sol's most popular destinations, is renowned for its traditional Andalusian charm, beautiful beaches, and vibrant cultural life - Excellent Connectivity and Nearby Attractions - The development benefits from excellent road connections, providing quick access to the AP-7 motorway. Key points of interest include: - Benalmádena beaches - 3 km - Málaga Airport - 15 km (approximately 15 minutes by car) - Málaga city center - 24 km - Torrequebrada Golf - 6 km - Benalmádena Puerto Marina - 7 km - Tivoli World amusement park - 5 km - Your Ideal Home on the Costa del Sol - Whether you are looking for a permanent residence, a holiday retreat, or a solid investment, this new build development in Benalmádena Pueblo offers the perfect combination of quality, design, and location - Contact us today to schedule a viewing and secure your new home on the Costa del Sol - 924



Features:

Communal Pool

Double Bedrooms: 3

Parking - Space

Beach: 3000 Meters

Near Commercial Center

Useable Build Space: 89 Msq.

Number of Parking Spaces: 1

Elevator/Lift

Solarium: Yes

Gated

Location: Coastal, Urbanisation

Terrace: 87 Msq.

Near Schools