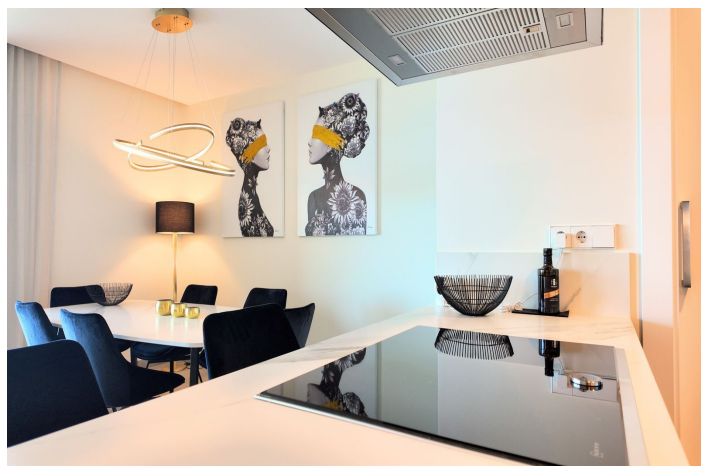
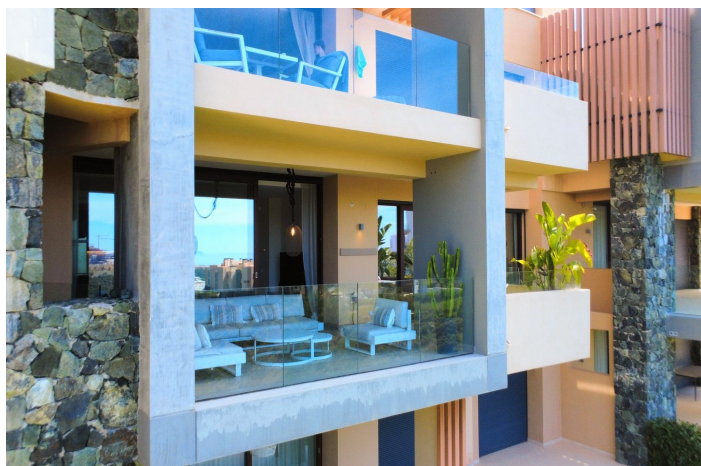




# Apartamento Planta Media en venta en Benahavís, Benahavís

850.000 €

Referencia: R5361229    Dormitorios: 2    Baños: 2    Construido: 100m<sup>2</sup>    Terraza: 36m<sup>2</sup>





---

## Costa del Sol, Benahavís

Newly build contemporary two-bedroom apartment in Real de la Quinta, Benahavis. Situated in the mountains of the Sierra de las Nieves. This modern gated community is surrounded by breath-taking nature and only 7km away from the beach. Surrounded by golf courses, a private Lake club will be opened in summer 2026 with a 36.000m2 lake for water activities such as kayak, paddle surf , windsurf, an artificial beach, wellness, spa, tennis and paddle courts and a six holes practise golf course.

The south west facing apartment of two bedrooms and two bathrooms has a covered terrace with panoramic views to the sea, where you can see Gibraltar and Africa on clear days, and enjoy impressive views to the mountains.

The open-plan layout connects kitchen, dining and living areas. The kitchen is fully fitted with high end appliances and modern fittings. The Master-bedroom has an ensuite bathroom and excess to the terrace where you can enjoy your morning coffee. There is a guest bedroom with a separate bathroom. The apartments sits in a secure gated community and has a private underground parking space and a storage room.

There is a community pool and landscaped gardens and a selecting of dining and leisure options nearby.

The apartment comes fully furnished and is key ready so you can start enjoying Andalucia from the very first day. As its situated between Marbella and Estepona the location is superb.



## Características:

### Características

Terraza Cubierta  
Ascensor  
Cerca de Transporte  
Terraza Privada  
Trastero - Almacén  
Baño En-Suite  
Doble acristalamiento  
Armarios Empotrados  
Gimnasio  
Paddle Tennis  
Pista de Tennis  
Lavadero  
Restaurant

### Vistas

Vistas al Mar  
Vistas a Montaña

### Piscina

Piscina Comunitaria

### Jardin

Jardín Comunitario

### Categoría

Golf  
Reventa  
Contemporáneo

### Orientación

Orientación Suroeste

### Posición

Cerca de Golf  
Urbanización  
Cerca de Tiendas  
Cerca de Colegios  
Campo  
Cerca de Marina

### Muebles

Completamente Amueblada

### Seguridad

Recinto Cerrado  
Seguridad de 24 horas

### Climatización

Aire Acondicionado  
Suelo Radiante

### Estado

Excelente estado de conservación

### Cocina

Cocina Equipada

### Aparcamiento

Parking Subterráneo