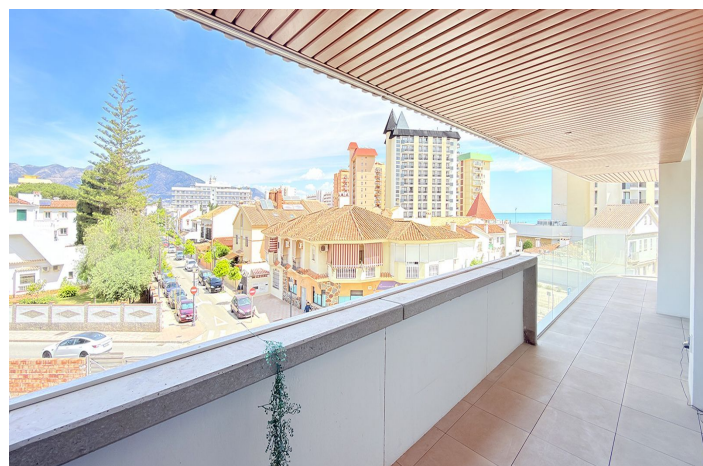




Apartamento Planta Media en venta en Fuengirola, Fuengirola

820.000 €

Referencia: R5360548 Dormitorios: 2 Baños: 2 Construido: 114m² Terraza: 27m²





Costa del Sol, Fuengirola

Set within the refined environment of Jade Tower, this elegant second floor residence offers a seamless blend of contemporary design and Mediterranean lifestyle, just moments from the sea.

The apartment welcomes you into a bright open plan living and dining area where large sliding doors invite natural light to flow throughout the space. The interior extends effortlessly onto a remarkable L shaped terrace of nearly 55 square metres, designed to become a true extension of the home. Carefully arranged into distinct areas, it offers a refined outdoor lounge, a generous dining setting and additional space to unwind in complete privacy. From here, the views open toward the sea, while the left wing captures the presence of the mountains, creating a unique sense of depth and perspective. Overlooking a charming urban landscape of traditional rooftops, palm trees and wide avenues leading directly to the coastline, the atmosphere feels both lively and serene.

Inside, approximately 88 square metres have been thoughtfully distributed to maximise comfort and functionality. Two spacious bedrooms and two bathrooms provide a balanced layout, while a separate laundry area enhances everyday convenience. The overall design reflects a modern aesthetic focused on clean lines, soft tones and effortless living.

Beyond the private residence, the development offers a curated collection of premium amenities designed to elevate daily life. Residents enjoy outdoor swimming pools, a heated indoor pool, a fully equipped gym, spa and sauna, a private cinema room, a gastro bar and elegant co-working spaces, all within a secure and well maintained environment.

A private underground parking space and a storage room complete this exceptional property.

A sophisticated home where space, light and lifestyle come together naturally, offering a refined way to experience Fuengirola.

For further details or to arrange a private viewing, feel free to get in touch.

Middle Floor Apartment, Fuengirola, Costa del Sol.

2 Bedrooms, 2 Bathrooms, Built 0 m².

Setting : Town, Beachside, Close To Port, Close To Shops, Close To Sea, Close To Schools, Urbanisation.

Orientation : East, South, South West.

Condition : Excellent, New Construction.

Pool : Communal.

Climate Control : Air Conditioning, Hot A/C, Cold A/C.

Views : Sea, Mountain, Panoramic, Urban.

Features : Covered Terrace, Lift, Fitted Wardrobes, Near Transport, Private Terrace, Solarium, Gym, Sauna, Storage Room, Ensuite Bathroom, Marble Flooring, Bar, Double Glazing, 24 Hour Reception, Restaurant On Site, Near Church.

Furniture : Optional.

Kitchen : Fully Fitted.

Garden : Communal.

Security : Gated Complex, Entry Phone, 24 Hour Security.

Parking : Underground, Covered.

Utilities : Electricity, Drinkable Water.

Category : Beachfront, Cheap, Holiday Homes, Investment, Luxury, Resale, Contemporary.



info@sparklinghomesmarbella.es

+34 662 377 539



Características:

Características

Terraza Cubierta
Ascensor
Cerca de Transporte
Terraza Privada
Trastero - Almacén
Baño En-Suite
Suelos de Mármol
Doble acristalamiento
24 Horas Recepción
Armarios Empotrados
Solario
Gimnasio
Sauna
Bar
Restaurant
Cerca de una Iglesia

Vistas

Vistas al Mar
Vistas a Montaña
Vistas Panorámicas
Vistas Urbanas

Piscina

Piscina Comunitaria

Jardin

Jardín Comunitario

Servicios Públicos

Electricidad
Agua Potable

CO2 Emission Rating

B

Orientación

Este
Sur
Orientación Suroeste

Posición

Lado de la Playa
Cerca de Puerto
Urbanización
Cerca del Mar
Cerca de Tiendas
Cerca de Colegios
Ciudad

Muebles

Opcionales

Seguridad

Recinto Cerrado
Seguridad de 24 horas
Portero Automático

Categoría

Casas de vacaciones
Inversion
Frente a la playa
Barato
Lujo
Reventa
Contemporáneo

Climatización

Aire Acondicionado
A/A Frio
A/A Caliente

Estado

Excelente estado de conservación
Nueva Construcción

Cocina

Cocina Equipada

Aparcamiento

Párking Subterráneo
Párking Cubierto

Calificación energética

B