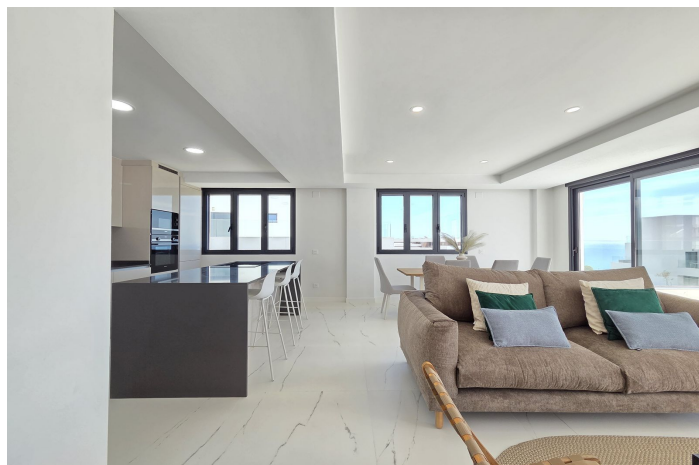




# Middle Floor Apartment for sale in Estepona, Estepona

575,000 €

Reference: R5366644 Bedrooms: 3 Bathrooms: 3 Build Size: 118m<sup>2</sup> Terrace: 48m<sup>2</sup>





---

## Costa del Sol, Estepona

Azata Delmare is a modern luxury residential development located in the Casares Costa, right on the border with Estepona (and within 20 minutes leisurely walk to the beach). Views towards the Sierra Bermeja mountain range from the back of the property, and frontal sea views from the living area.

This modern contemporary (brand new and never lived in) 3 bedroom, 2.5 bathroom middle floor apartment offers the perfect blend of both beach, golf and mountain facilities within a few minutes.

As you enter the property you have a hallway with wardrobe and ample storage space (entry phone) and guest loo.

The open plan kitchen and dining room has lots of natural light and has access to the south facing terrace with sea views. The ultra modern kitchen includes Siemens appliances (dishwasher, washing machine, oven and induction hob, fridge & freezer ) included with touch panel doors and sleek central island with seating area.

The living area has wide terrace doors allowing lots of natural light to flood the room, which open on the large terrace area with sea views.

As we enter back through the property we have a separate hallway which can be closed off from the separate living area. Here you also have a luxurious stone shower room and double sink.

The master suite, is spacious and has plenty of wardrobe storage with access to a private terrace with views of the gardens. Also ensuite with large modern walk in shower and double sink. Window for natural light .

The 2nd double bedroom (currently twin beds), lovely open view from the terrace. The 3rd double bedroom also shares the terrace, with mountain and garden views.

The property has underground parking and very large storage room.

### SOLD FULLY FURNISHED

There is a community infinity pool with views towards the beach and sea (south facing aspect), showers and dedicated toilet facilities for residents. Within this communal garden area will be &nbsp;a &nbsp;community &nbsp;space &nbsp;(currently &nbsp;being &nbsp;discussed as a &nbsp;restaurant or social club for residents).

Also &nbsp;a gymnasium which &nbsp;will &nbsp;be fully &nbsp;equipped and &nbsp;solely &nbsp;for &nbsp;residents &nbsp;use.

VIDEO &nbsp;AVAILABLE &nbsp;ON &nbsp;REQUEST



## Features:

### Features

Lift  
Private Terrace  
Storage Room  
Ensuite Bathroom  
Marble Flooring  
Fitted Wardrobes  
Gym

### Views

Sea Views  
Mountain  
Country  
Garden

### Pool

Communal

### Garden

Communal  
Landscaped

### Utilities

Electricity

### Orientation

South  
South East  
North West

### Setting

Beachside  
Close To Port  
Close To Sea  
Close To Town  
Close To Schools  
Country  
Close To Marina

### Furniture

Fully Furnished

### Security

Gated Complex  
Electric Blinds  
Entry Phone

### Category

Holiday Homes  
Investment  
Golf  
Luxury  
Contemporary

### Climate Control

Pre Installed A/C

### Condition

Excellent  
New Construction

### Kitchen

Fully Fitted

### Parking

Underground