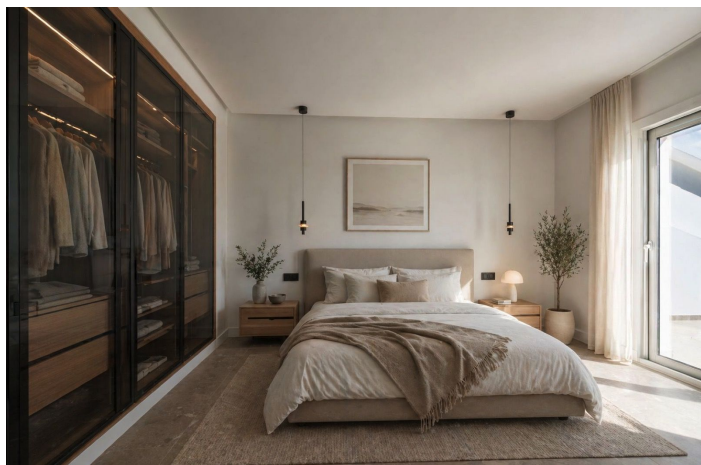




Middle Floor Apartment for sale in Aloha, Marbella

850,000 €

Reference: R5371186 Bedrooms: 3 Bathrooms: 2 Build Size: 126m² Terrace: 75m²





Costa del Sol, La Quinta

Recently Refurbished 3-Bedroom Apartment with Huge 75 m² Terrace & Sea Views in Aloha, Marbella

Discover this bright and spacious apartment in the exclusive and highly sought-after Aloha urbanisation, located in the prestigious Golf Valley of Nueva Andalucía, Marbella. This privileged position offers easy access to world-class golf courses (including Aloha Golf Club), while being just 5–7 minutes by car from glamorous Puerto Banús, the beach, and San Pedro de Alcántara. Marbella centre is approximately 10–12 minutes away.

This recently fully refurbished property offers 126 m² built (107 m² useful) and features an exceptional 75 m² private terrace with beautiful sea views and golf course vistas. The south-east orientation ensures excellent natural light and sunshine throughout the day, turning the terrace into a fantastic outdoor living space – ideal for dining, relaxing, or entertaining.

The modern layout includes three generous bedrooms, two contemporary bathrooms, designer built-in wardrobes, and a stylish American (open-plan) kitchen that flows seamlessly into the living area. The apartment is sold unfurnished (the furniture shown in the images is CGI) and is ready to move into or personalise to your taste. It benefits from air conditioning and is located on the first floor interior of a well-maintained building with a community swimming pool.

Key Features:

Recently renovated to a high standard

Huge 75 m² terrace with sea and golf views

American open-plan kitchen

Designer fitted wardrobes

Air conditioning

Community pool

A rare opportunity to own a property with one of the largest terraces in Aloha, in one of Marbella's most desirable and well-connected golf communities.



Features:

Features

Near Transport
Private Terrace
Ensuite Bathroom
Marble Flooring
Double Glazing
Fitted Wardrobes
Fiber Optic

Views

Sea Views
Panoramic
Country
Garden
Golf

Pool

Communal

Garden

Communal

Orientation

South East

Setting

Close To Golf
Urbanisation
Close To Shops
Close To Town
Close To Schools
Frontline Golf

Furniture

Not Furnished

Security

Gated Complex
Entry Phone

Climate Control

Air Conditioning

Condition

Excellent
Recently Refurbished
Recently Renovated

Kitchen

Fully Fitted

Parking

Communal