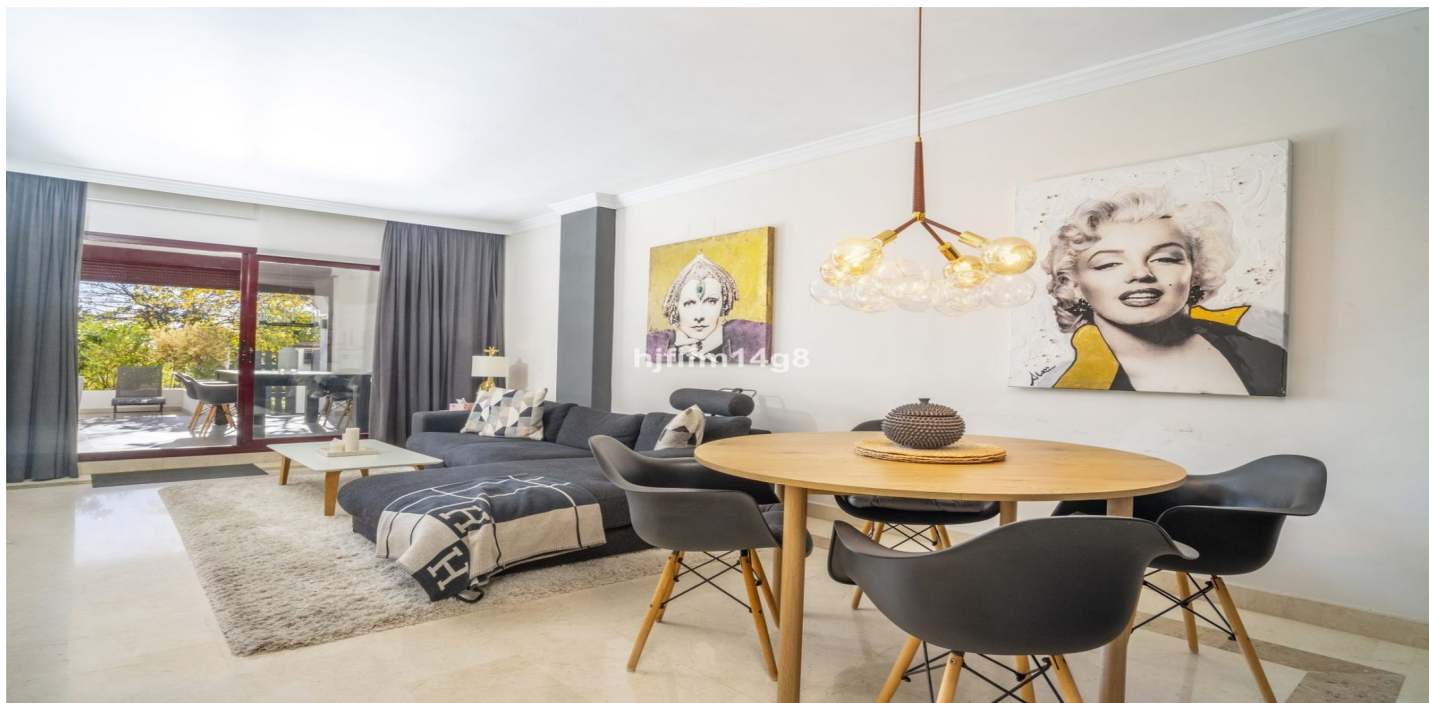




Wohnung im Erdgeschoss zum Verkauf in San Pedro de Alcántara, San Pedro de Alcántara

590.000 €

Referenz: R5371969 Schlafzimmer: 2 Badezimmer: 2 Grundstücksgröße: 21m² Garten: 88m² Terrasse: 28m²





Costa del Sol, San Pedro de Alcántara

This attractive 2 bedroom ground floor apartment for sale in Edificio Noray is ideally located in the highly sought-after San Pedro beachside area, just a short walk from the promenade, the beach and all local amenities. Edificio Noray is a well-established and well-maintained urbanisation, known for its peaceful residential atmosphere, mature communal areas and excellent proximity to the sea, making it ideal both as a permanent residence and as a holiday home or investment property.

The apartment offers a bright and comfortable layout with a combined dining and living area that opens directly onto a spacious private terrace. The terrace features both covered and uncovered areas, allowing you to enjoy outdoor living all year round, whether for dining, relaxing or entertaining. The fully fitted kitchen is practical and stylish, featuring a breakfast bar designed like a wall-attached island, and is complemented by a separate utility room for added convenience.

The master bedroom includes an en-suite bathroom and has direct access to the terrace, creating a seamless indoor-outdoor feel. A second guest bedroom is ideal for family or visitors. The property also features a second bathroom with a walk-in shower, adding extra comfort and convenience.

There is one parking place included in the price.

Located in San Pedro Playa, this ground floor apartment benefits from a prime beachside setting close to restaurants, cafés, shops, schools and sports facilities, with easy access to Marbella and Puerto Banús. This property in Edificio Noray represents an excellent opportunity to enjoy relaxed Mediterranean living in one of the most desirable areas of San Pedro de Alcántara.



Eigenschaften:

Merkmale

Überdachte Terrasse

Aufzug

In der Nähe des Transports

Private Terrasse

Küche

Teilweise montiert

Parken

Privat

Einstellung

Strand

In der Nähe des Meeres

In der Nähe von Geschäften

In der Nähe von Schulen

Garten

Gemeinschaft

Energiebewertung

E

Pool

Gemeinschaft

Sicherheit

Gated Complex

CO2 -Emissionsbewertung

D